

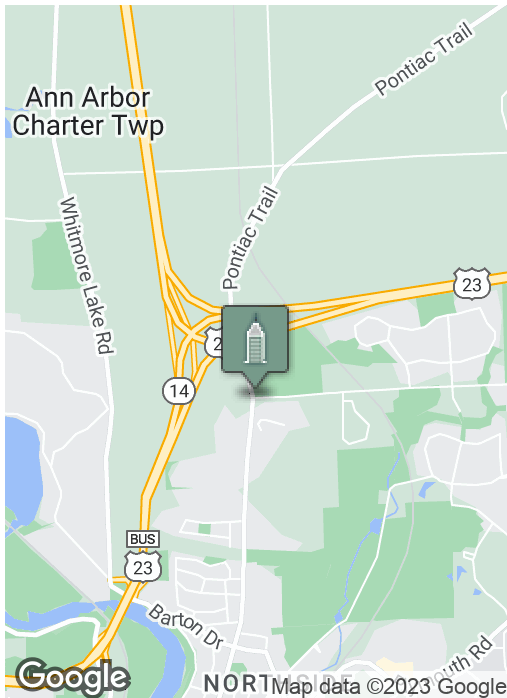
Mixed Use Development Site

1500 DHU VARREN, ANN ARBOR, MI 48105



Swisher
COMMERCIAL

FOR SALE



SUMMARY

Sale Price:	\$2,200,000
Lot Size:	4.85 Acres
Zoning:	PUD
2023 Taxes	\$14,934.18
Parcel ID #	09-09-16-200-002

PROPERTY HIGHLIGHTS

- Mixed use development opportunity
- Located on Ann Arbor's northside
- Higher elevation with views of Ann Arbor and Huron River
- Currently in planning stages for 150 units with commercial space on the ground level
- Area of new development, parks trails and minutes to downtown.

***Building
relationships.***

208 East Washington Street Ann Arbor, MI 48104

734.663.0501

Charlie Koenn

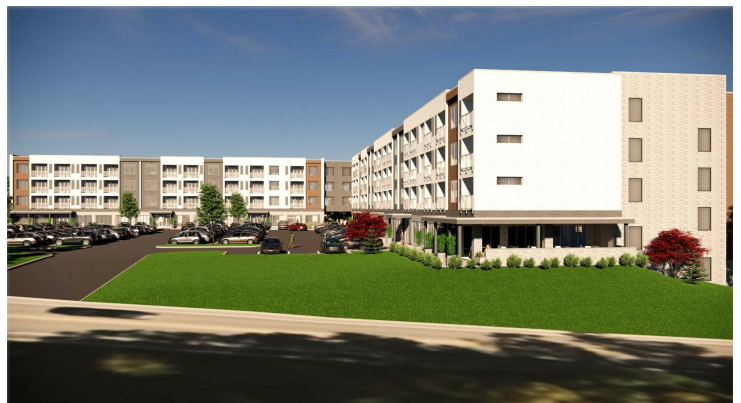
734.926.0230

CKOENN@SWISHERCOMMERCIAL.COM

SWISHERCOMMERCIAL.COM

Mixed Use Development Site for Sale

1500 DHU VARREN, ANN ARBOR, MI 48105



Building relationships.

208 East Washington Street Ann Arbor, MI 48104

734.663.0501

Charlie Koenn

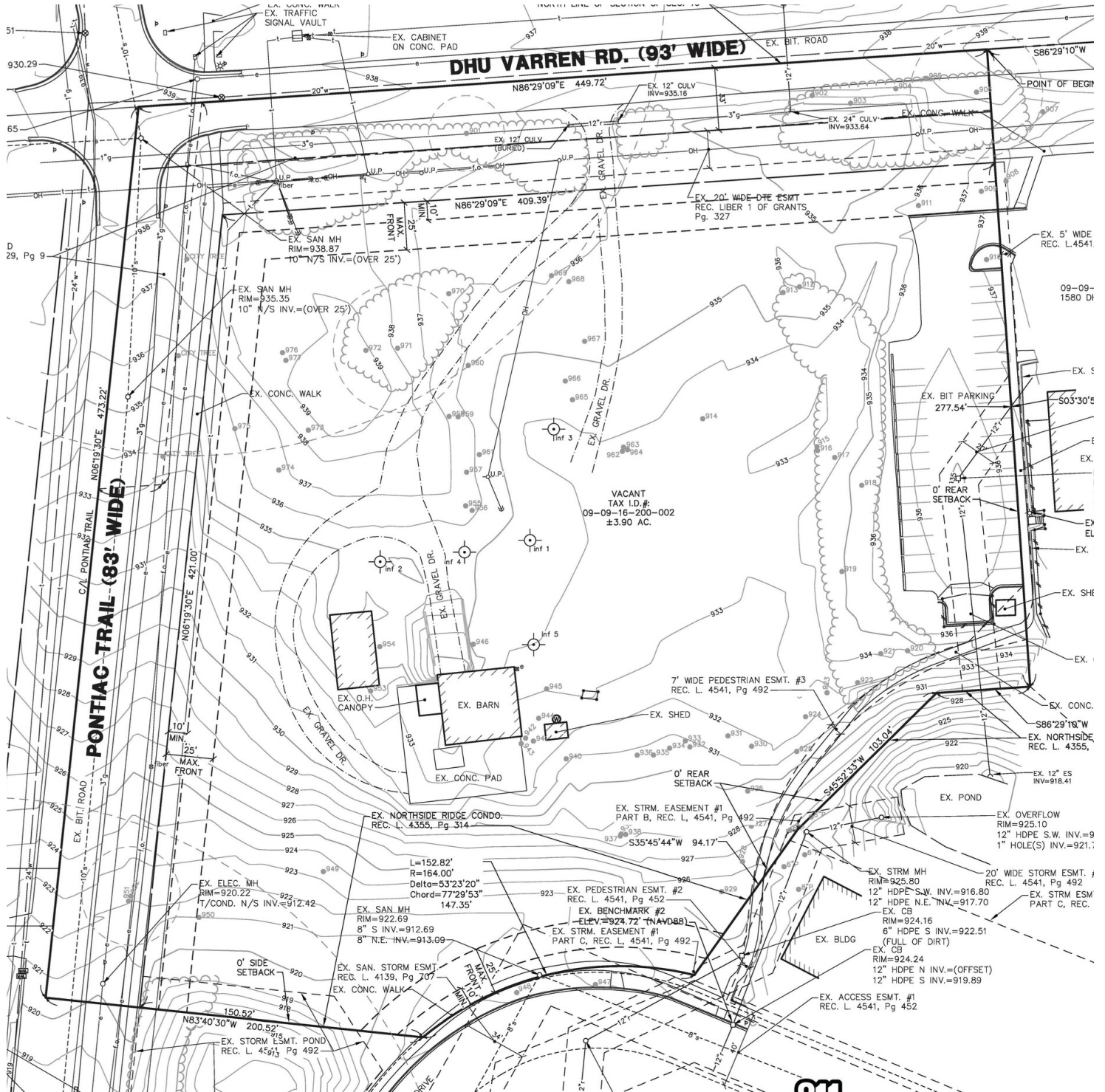
734.926.0230

CKOENN@SWISHERCOMMERCIAL.COM

SWISHERCOMMERCIAL.COM

4.85 Acre Ann Arbor Mixed Use Development Site for Sale

1500 DHU VARREN, ANN ARBOR, MI 48105



Building relationships.

208 East Washington Street Ann Arbor, MI 48104

734.663.0501

Charlie Koenn

734.926.0230

CKOENN@SWISHERCOMMERCIAL.COM

SWISHERCOMMERCIAL.COM

4.85 Acre Ann Arbor Mixed Use Development Site for Sale

1500 DHU VARREN, ANN ARBOR, MI 48105



Building relationships.

208 East Washington Street Ann Arbor, MI 48104

734.663.0501

Charlie Koenn

734.926.0230

CKOENN@SWISHERCOMMERCIAL.COM

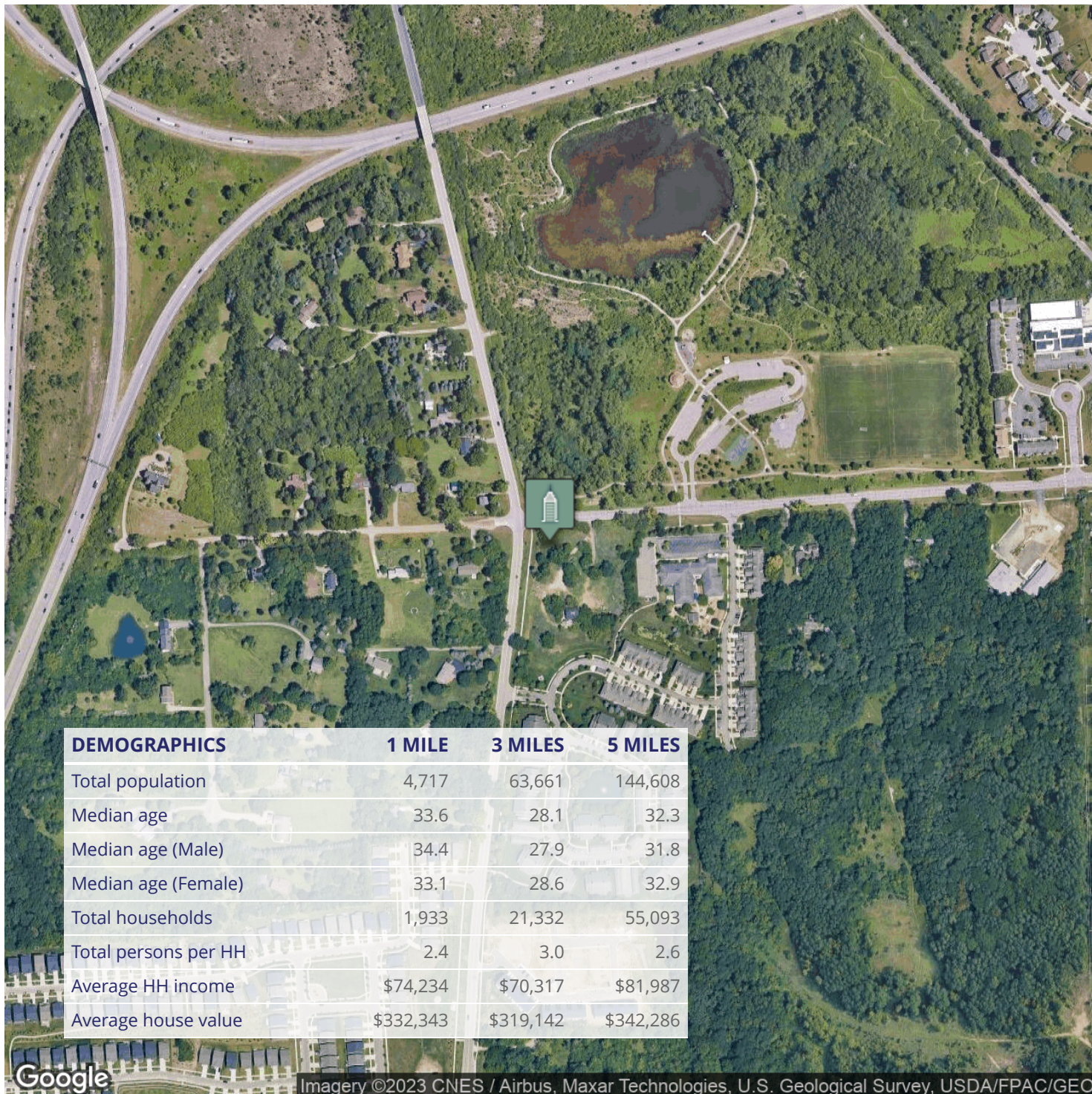
SWISHERCOMMERCIAL.COM

Mixed Use Development Site for Sale

1500 DHU VARREN, ANN ARBOR, MI 48105



Swisher
COMMERCIAL



DEMOGRAPHICS	1 MILE	3 MILES	5 MILES
Total population	4,717	63,661	144,608
Median age	33.6	28.1	32.3
Median age (Male)	34.4	27.9	31.8
Median age (Female)	33.1	28.6	32.9
Total households	1,933	21,332	55,093
Total persons per HH	2.4	3.0	2.6
Average HH income	\$74,234	\$70,317	\$81,987
Average house value	\$332,343	\$319,142	\$342,286

Google

Imagery ©2023 CNES / Airbus, Maxar Technologies, U.S. Geological Survey, USDA/FPAC/GEO

***Building
relationships.***

208 East Washington Street Ann Arbor, MI 48104

734.663.0501

Charlie Koenn

734.926.0230

CKOENN@SWISHERCOMMERCIAL.COM

SWISHERCOMMERCIAL.COM