

(2) LIVE AUCTIONS GLEI'S ORCHARD & GREENHOUSES

BY ORDER OF THE HILLSDALE COUNTY CIRCUIT COURT, ALL REAL ESTATE & EQUIPMENT WILL BE SOLD Hillsdale, MI

Complete sell out of Real Estate & Equipment

- TOTAL OF 280 ACRES OF LAND
- 135 ACRES OF ROW CROP LAND
- 85 ACRES OF PRODUCING APPLE ORCHARDS – HIGH VOLUME VARIETY TYPES OF APPLES
- IRRIGATION (ON BOTH FARMS)
- 10' HIGH DEER FENCING (BOTH FARMS)
- GREENHOUSES – 66,000 SF OFFERED ON SEPARATE PARCEL
- 7 ACRES OF EVERGREEN CHRISTMAS TREES
- CONTROLLED ATMOSPHERE STORAGE – COLD STORAGE – PACKING PLANT
- FULL LINE OF ORCHARD & FARM EQUIPMENT
- REAL ESTATE OFFERED IN SEVERAL PARCELS, IN ANY COMBINATION OF PARCELS, OR IN ITS ENTIRETY



Auction Info

Auction #1

Real Estate | Thurs., December 7 | 1PM

Auction #2

Equipment | Thurs., December 14 | 10AM

MIEDEMA    
AUCTIONEERING, INC.

LIVE & ONLINE AUCTIONS

601 Gordon Industrial Court, Byron Center, MI 49315

MiedemaAuctioneering.com | Orbitbid.com

Auction Held in Cooperation with:



Charlie Koenn
734-926-0233

GLEI'S REAL ESTATE AUCTION THURS., DECEMBER 7 - 1PM

Live Real Estate Auction will be held at 2121 Lewis Emery Dr., Hillsdale, MI (Lewis Emery Park Community Building)

Parcel 1:
± 61 Acres | Frontage on Milnes Road
Highlights:
• 8,260 SF Packing Plant with Shipping Area & Loading Docks
• 5,720 SF Cold Storage with CA Rooms, 20' Ceiling Heights, Refrigeration System for CA & Long-Term Storage
• 4,200 SF Shop/Equipment Building
• 3,528 SF Machine Shed
• Pesticide Storage Building
• Multi-Family 3-Unit Migrant Housing Home for up to 21
• This parcel has several acres of producing apple orchards with popular varieties, ± 20 Acres of wooded land and tillable farm land.

Parcel 2:
± 68 Acres of Land | Frontage on Mauck Road
Highlights:
• Nearly all Tillable Land
• Currently has producing apple trees with popular varieties and land used for soybeans

Parcel 3:
± 46 Acres | Frontage on Milnes Road
Highlights:
• ± 66,682 SF of Greenhouses
• Large Retail Store Building with Cooler
• Large Parking Lot
• Large Propane Tank
• Large Building used for Greenhouse
• ± 35 Acres of Tillable Land

Parcel 4:
± 10.7 Acres of Tillable Land or a Beautiful Building Site | Frontage on Gay Road

Parcel 5:
± 7.8 Acres of Land, Mostly Tillable with some Wooded Land towards the back | Frontage on Gay Road

Parcel 6:
± 11 Acres of Land with Pond. This parcel is the pond used to irrigate the main farm on Milnes Road. Also includes low land with higher land towards the back | Frontage on Gay Road

Parcel 7:
± 7 Acres of Land, mostly tillable with a gravel pit in the back portion | Frontage on Gay Road

Parcel 8:
± 50 Acres, mostly all farmable with several acres of apple orchards. Also includes a machine shed | Frontage on Brown Road

Parcel 9:
± 20 Acres all Tillable land. Currently has apple trees and soybeans | Frontage on Brown Road

Parcels 8 & 9 share a common 10' high Deer Fence

Parcels will be offered in individual parcels, any combo of parcels or in its entirety

Real Estate Auction Contact

Sid Miedema | 616-560-2707 | Sid@1800lastbid.com



Open House Dates
Mon., Nov. 20 (1PM-4PM)
Thurs., Nov. 30 (1PM-4PM)

GLEI'S EQUIPMENT AUCTION THURS., DECEMBER 14 - 10AM

Live Equipment Auction will be held on the Farm at 3500 Milnes Rd., Hillsdale, MI

Compac Apple Sorting & Packing Line

- Compac Spectrum single lane defect and sorter, 10 bag head, only 6 years old, with inspection table, control panels, computer. Has external defect sorter and wired for internal defect sorter
- Washer waxer Absorber with fans
- Aqua Therm Drying Tunnel
- Preliminary Sizer
- F and S tray packer
- Bin Filler with Round table

Above Bullets Offered Separately

Cider Equipment (Most New in 2010)

- Selling as 1 complete unit Mechanical Bin dumper, receiving belt, washer, absorber & brushes, elevator, Hammermill, Good Nature SX280 Squeeze box press
- Filler Specialties 6 head bottle filler
- Cider Sure 5500 UV Machine
- (3) Chem-Tek SS tanks, 600 gallon (Selling Separately)

Greenhouse Equipment

- Elevator, Drum Mixer, Holding Hopper – ±12 yards w/bagger unit, Flat Filler, Blackmore Rotary Seeder
- Rotofiller RF1

Orchard Equipment

- Orsi Orchard Platform, Equipped for Harvest & Pruning, Air Compressor
- (2) Ag Tec 400C Orchard Sprayers, 540 PTO, Orchard & Row Crop Heads
- Harveta Kit Sprayer Attachment for Growth Regulator
- 2200 Apple Bins, Mich Standard Boxes
- JD MX8 Brush Cutter
- NH Brush Hog, 4'
- FAMA (Italy) Orchard Hedger
- Phil Brown Weed Broom
- Phil Brown Brush Sweep, 14-15'
- Edwards Brush Sweep, 12'
- Phil Brown Root Pruner
- Phil Brown Tree Planter
- Flatbed Wagons, 17.5' x 8'
- Orchard Ladders
- Picking Baskets
- (3) Orchard Rite Frost Fans, Ford V-12, Auto, LP
- (2) Hail Bangers hail cannons, acetylene

Tractors

- Kubota M8030, OROPS, MFWD, 3PT, PTO, 1 Hyd. Outlet, 6,685 Hours
- NH T5060 Tractor, Cab, NH 835TL Loader, MFWD, 3PT, PTO, 2 Hyd. Outlets, 4,381 Hours
- NH Workmaster 50 Tractor, OROPS, MFWD, 3PT, PTO, 2 Rear & 2 Mid Hyd. Outlets, Phil Brown Front Forklift attachment, 2,783 Hours
- 2018 Kubota M5-111 Orchard Tractor, Cab, MFWD, 3PT, PTO, 3 Hyd. Outlets, Quikie X16 Loader, 3565 Hours
- NH TC18 Orchard Tractor, OROPS, MFWD, 3PT, PTO, 5,254 Hours
- NH TN95F Orchard Tractor, Cab, 2WD, 3PT, PTO, 2 Hyd. Outlets, 6,957 Hours
- JD 4310 Orchard Tractor, OROPS, MFWD, 3PT, PTO, 2 Mid Hyd. Outlets, Hours N/A
- Farmall M Tractor, PTO, 1 Hyd. Outlet, Gas

Skid Steer & Attachments

- CAT 289D Track Skid Steer, High Flow XPS, 2 Spd., Aux. Hydraulics, 2,063 Hours
- Forks, Buckets
- McMillen Extreme Duty Auger, QA, 12" & 22"

Forklifts

- Komatsu 15 Forklift, LP, 3-Stage, 2,600 lb. Model FG15ST-16
- Hyster 2005 Forklift
- Mitsubishi FGC 25N Forklift, LP, 4,600 lb.

Trucks & Trailers

- Dodge Ram 1500 Work Truck
- Chevy Work Van
- 2012 Nissan NV 3500 Van
- '03 Freightliner Tandem Straight Truck, 24' w/ hoist, CAT, 66,651 Miles
- ±'06 Freightliner Box Truck, Tandem, Hydraulic Tailgate, 26'
- '98 Dynawald Tandem Dual Trailer, 25 ton, 20'+5'
- '99 BNM Landscape Trailer, 18'
- Krause #2200 Tandem Disc
- Tye Grain Drill w/ Seeder, 10', 7.5", Model 104-4474
- Glencoe Soil Saver 5-Shank Chisel Plow

Farm Equipment

- Krause #2200 Tandem Disc
- Tye Grain Drill w/ Seeder, 10', 7.5", Model 104-4474
- Glencoe Soil Saver 5-Shank Chisel Plow

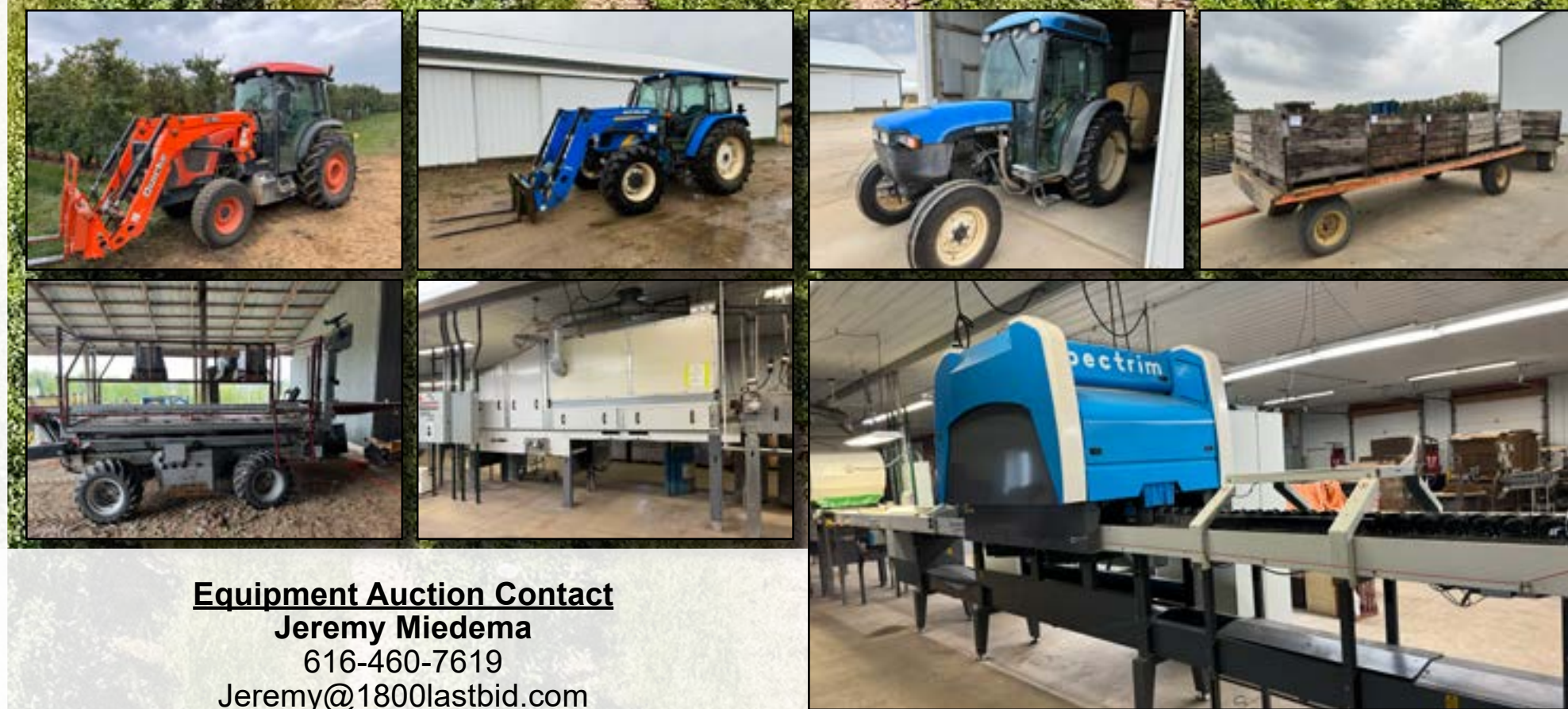
- John Deere P7000 4R Planter, Dry Fert.
- Arps Backblade, 8', Hyd. Angle
- Danuser Log Splitter, 3PT
- Bush Hog LLR72 Landscape Rake
- Brillion 3 Shank Ripper
- Brillion 10' Cultipacker
- Leveler/ Scraper, 8'
- 200 Gallon Sprayer, 30' w/ pump
- Knight 180 Manure Spreader
- Vermeer 3300 Tree Spade
- Dutchman MC16 Tree Spade
- (2) Ag Rain Travelers, Soft Hose, 6.5", 660', 540 PTO
- Winco PTO Generator, 125K, 3 Phase
- Katolight PTO Generator, 85K
- Double Head Christmas Tree Shaker
- (3) Christmas Tree Balers (Net)
- Friday Power Hoe
- MK Martin Snowblower, 72", 3PT
- Plastic Layer for vegetables
- Mech Transplanter Tunnel Layer
- 3PT Fork Attachments
- 75HP Berkley Centrifugal Irrigation Pump, electric

Shop Equipment

- Clark Floor Scrubber
- Pittsburgh Floor Jack
- Craftsman Tool Box
- Craftsman Drill Press
- Pedestal Grinder
- Lincoln Electric Power Mig 15
- Lincoln Ideal-Arc TM-300
- Stihl Chainsaws
- Wrenches & Other tools
- Dewalt Power Tools
- Vice
- Torch Set
- Ladders
- Ryobi 2700 PSI Pressure Washer
- Craftsman 150 PSI, 6 Gal. Air Compressor
- Shop Vac
- Battery Chargers
- SkilSaw 10" Miter Saw
- Crown Pallet Jacks
- Plus much more



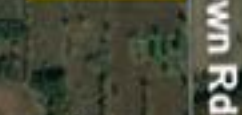
ONLINE BIDDING AVAILABLE FOR THE EQUIPMENT, PLEASE REGISTER TO BID AT MIEDEMAAUCTIONEERING.COM



Equipment Auction Contact

Jeremy Miedema
616-460-7619
Jeremy@1800lastbid.com

- 280 Acres offered in 9 Individual Parcels, in any combination of parcels, or in its entirety
- Parcels 1, 2 & 3 Common Features: Trickle Irrigation (Water from pond on Parcel 6), 10' High Deer Fence
- Parcel 3 has all of the Greenhouses
- For more information, see our Bidder's Packer which includes the Buy/Sell Agreement, Soil Maps, etc., visit MiedemaAuctioneering.com or call 616-538-0367



Real Estate Auction will be held at Lewis Emery Park in The Lewis Emery Community Building at 2121 Lewis Emery Dr., Hillsdale, MI. Once inside the park, follow the auction signs to the community building.

10% BUYERS PREMIUM IN EFFECT FOR THE REAL ESTATE ONLY

ONLINE BIDDING

FOR THE REAL ESTATE, TO BID ONLINE YOU MUST PRE-REGISTER BY THURSDAY, NOVEMBER 30. CALL DONNA AT 616-538-0367 EXT 1117. A DEPOSIT OF \$5,000 WILL BE REQUIRED PRIOR TO APPROVAL TO BID ONLINE.



Auction Info

Auction held in cooperation with Mr. Charlie Koenn



GLEI'S ORCHARD & GREENHOUSES

BY ORDER OF THE HILLSDALE COUNTY CIRCUIT COURT, ALL REAL ESTATE & EQUIPMENT WILL BE SOLD

Real Estate &
Equipment

- **TOTAL OF 280 ACRES OF LAND**
- **135 ACRES OF ROW CROP LAND**
- **85 ACRES OF PRODUCING APPLE ORCHARDS – HIGH VOLUME VARIETY TYPES OF APPLES**
- **IRRIGATION (ON BOTH FARMS)**
- **10' HIGH DEER FENCING (BOTH FARMS)**
- **GREENHOUSES – 66,000 SF OFFERED ON SEPARATE PARCEL**
- **7 ACRES OF EVERGREEN CHRISTMAS TREES**
- **CONTROLLED ATMOSPHERE STORAGE – COLD STORAGE – PACKING PLANT**
- **FULL LINE OF ORCHARD & FARM EQUIPMENT**
- **REAL ESTATE OFFERED IN SEVERAL PARCELS, IN ANY COMBINATION OF PARCELS, OR IN ITS ENTIRETY**

Auctioneer's Note: Young producing apple orchards with popular varieties as well as top producing farm land. Buy for cash crop or orchard. Greenhouses can be bought in a separate parcel. Outstanding opportunity – all must be sold!

Real Estate | Thurs., December 7 | 1PM
Equipment | Thurs., December 14 | 10AM

GLEI'S ORCHARD & GREENHOUSES

LIVE Auction #1: Real Estate | Thursday, December 7

LIVE Auction #2: Farm Equipment | Thursday, December 14

Hillsdale, Michigan

280 ACRES



Auction Info

MIEDEMA
AUCTIONEERING, INC.
LIVE & ONLINE AUCTIONS



PRST STD MAIL
US POSTAGE
PAID
GRAND RAPIDS, MI
PERMIT NO 1

601 Gordon Industrial Court, Byron Center, MI 49315

Auctioneer's Note: Young producing apple orchards with popular varieties as well as top producing farm land. Buy for cash crop or orchard. Greenhouses can be bought in a separate parcel. Outstanding opportunity – ALL MUST BE SOLD!

Real Estate Terms

Registration: Begins at 12PM at 2121 Lewis Emery Dr., Hillsdale, MI.
Deposit for Real Estate: 10% of the successful bid price is required at the auction by good check, cash or cashier's check. This deposit is NOT refundable if the buyer does not carry through with the purchase. Your bidding is not conditional upon financing, so be sure you have arranged financing if needed or are capable of paying cash at the closing.
Conditions: The terms and conditions of this auction will be governed by the contract for the sale of Real Estate (herein called the buy/sell). The following terms are a summary provided for the convenience of the bidder. The buy/sell is available in a particular purpose, or any matter of whatsoever type of nature. Any improvements, which must be made, are the responsibility of the

purchaser. All information advertised or stated was derived from sources believed correct but is not guaranteed. All property dimensions are only approximations. Buyers shall rely entirely on their own information, judgment and inspection of the property and record. The real estate will be sold free and clear of all the liens. The property will however be sold subject to any easements and building and use restrictions of record. Any announcements made at the auction site take precedence over printed material. Sells subject to the approval of the Receiver. **A 10% Buyers Premium will be added to the high bid.**
Closing Terms: Balance of purchase price due at the closing. The seller will pay taxes and assessments due on or before the auction. Possession at closing except for the apple storage building. Seller shall provide an owners title insurance policy in the amount of the purchase price. Closings will be held at a local title company. Closing fees of approx. \$450 will be divided evenly between the buyer and the seller.

Buyer's Note: If you are the successful bidder, you must go to the closing table to sign all the purchase agreements immediately following the conclusion of the auction. At that time, your check will be endorsed as a non-refundable deposit on the property. Individual purchases are to be considered as singular transactions, not contingent on any other purchases of properties on the auction. The ability to obtain financing is NOT a contingency of the sale. The auction will be conducted at the sole discretion of the auctioneer and any bids may be recognized at their discretion.
New Data: New data, corrections or changes could be made after the printing of this brochure. Please arrive prior to the start of the auction to inspect and consider any information and changes.
Bidder's Packet: Complete bidder's packets including copies of the buy/sell agreements, Soil information, Title Commitments, etc. will be available by calling to request a packet to be mailed at 616-538-0367 or visit our website at MiedemaAuctioneering.com.

Equipment Terms

INSPECTION: Wednesday, December 13 (9am-4pm) and Auction Day beginning at 9am.
REMOVAL OF EQUIPMENT: Auction day until 5pm or make other arrangements. No Sunday removal.
SALES TAX: No Sales Tax except on titled vehicles which will be charged a Michigan State Sales Tax, unless you provide our office with a copy of a valid dealer's license.
TITLED VEHICLES: State Regulations require that we broker all vehicles sold, therefore you must sign your paperwork in the auction office. A \$125 broker fee will be charged for paperwork. In addition, a \$15 title application fee will be collected for the State of Michigan (Dealers are exempt from the title application fee ONLY). Miedema Auctioneering will then process your titles. If you wish to plate your vehicle there will be an additional fee and proof of insurance will need to be provided for removal.
PAYMENT: We accept payment with cash, personal check and cashier's check. Local checks will be accepted at auction co discretion. Out of state checks MUST have a bank letter of credit GUARANTEEING payment to MIEDEMA AUCTIONEERING INC. for this auction and the amount of funds being guaranteed.
TERMS: All items sell "AS IS WHERE IS" with no warranty. There shall be no guarantees or warranties, expressed or implied, statutory or otherwise as to the merchantability or fitness for any particular purchase of goods offered in this sale. Complete payment auction day. All written material is subject to change. Announcements made day of sale take precedence over printed material.

Auction Calendar

Mary & Martin Ross Estate Live Auction

Saturday, October 28 | Lawton, MI

Mary & Martin Ross have resided at their current residence for more than 50 years. They had a small cattle farm along with working full time for WMU. They have hired Miedema Auctioneering to sell their farm equipment, collectibles, Tools, and more starting at 10am. Selling with 2 Auction Rings. Ring 1 will be power tools, woodworking equipment, gas powered equipment, collectibles, assorted antique clocks, etc. Ring 2 will start at 11 am with the tractors and farm equipment.

Blue Star Farms Live Auction

Wednesday, November 1 | Fennville, MI

Blue Star Farms: Specializing in Blueberries and Cranberries. Owner: Tony Marr | Due to Tony's recent accident, Tony has decided to sell all his farm equipment with Miedema Auctioneering through live auction with internet bidding starting at 10am. Highlights: Oxbo 8140 & 8000 Blueberry Harvesters, (3) BEI Blueberry Harvesters, (3) JD 5101EN Tractors, (2) JD 5525N Tractors, Kubota M5-091 Tractor with Rear Tracks, Forklifts, Orchard Sprayers, Rototillers, Cranberry Pump, Fresh Pack Packing Line, Frozen Packing Line, plus much, much more.

Fall Hudsonville Equipment Live Auction

Saturday, December 2 | Hudsonville, MI

Multi-Ring auction selling construction equipment, farm equipment and support equipment. NOTE: This will be a LIVE auction! Online bidding is available through Proxibid on Rings 1 & 2 if you prefer to bid online.

Glei's Orchard & Greenhouses RE Live Auction

Thursday, December 7 | Hillsdale, MI

By order of the Hillsdale County Circuit Court. 280 acres offered in individual parcels, in any combo, or in it's entirety. Includes 79 acres of apple orchards in their prime, tillable, productive farm land, modern CA and storage buildings, 66,000 SF of greenhouses with a retail store building offered on a separate parcel. Prime farm land with irrigation available.

Barbour Farms, LLC Live Auction

Saturday, December 9 | Lake Odessa, MI

Dan, Steve, and Mark Barbour have decided to retire from farming and have hired Miedema Auctioneering to conduct a live auction starting at 10am. Highlights: Case 235 Magnum, Case 210 Magnum, Case 125 Maxxum w/ Loader, Case 2166 Combine, Case 2206 Corn head, Case 1020 Grain Head, Kinze 3000 Planter, John Deere 1560 Grain Drill, Kuhn/Krause Excellerator 8000, Brent 544 Wagons, Tillage Equipment & Support Equipment.

Glei's Orchard & Greenhouses Equipment Live Auction

Thursday, December 14 | Hillsdale, MI

By order of the Hillsdale County Circuit Court. Featuring: Orchard farm equipment, complete Compac apple grading line, complete cider processing line, wind machines, Greenhouse equipment, farm equipment, trucks, trailers, apple bins, shop tools, etc. Live auction at the farm with internet bidding available.