

FIRST FLOOR PLAN
 1/4" = 1'-0"
 3328 SQ. FT. FIRST FLOOR
 3180 SQ. FT. SECOND FLOOR
 10,508 TOTAL SQ. FT.

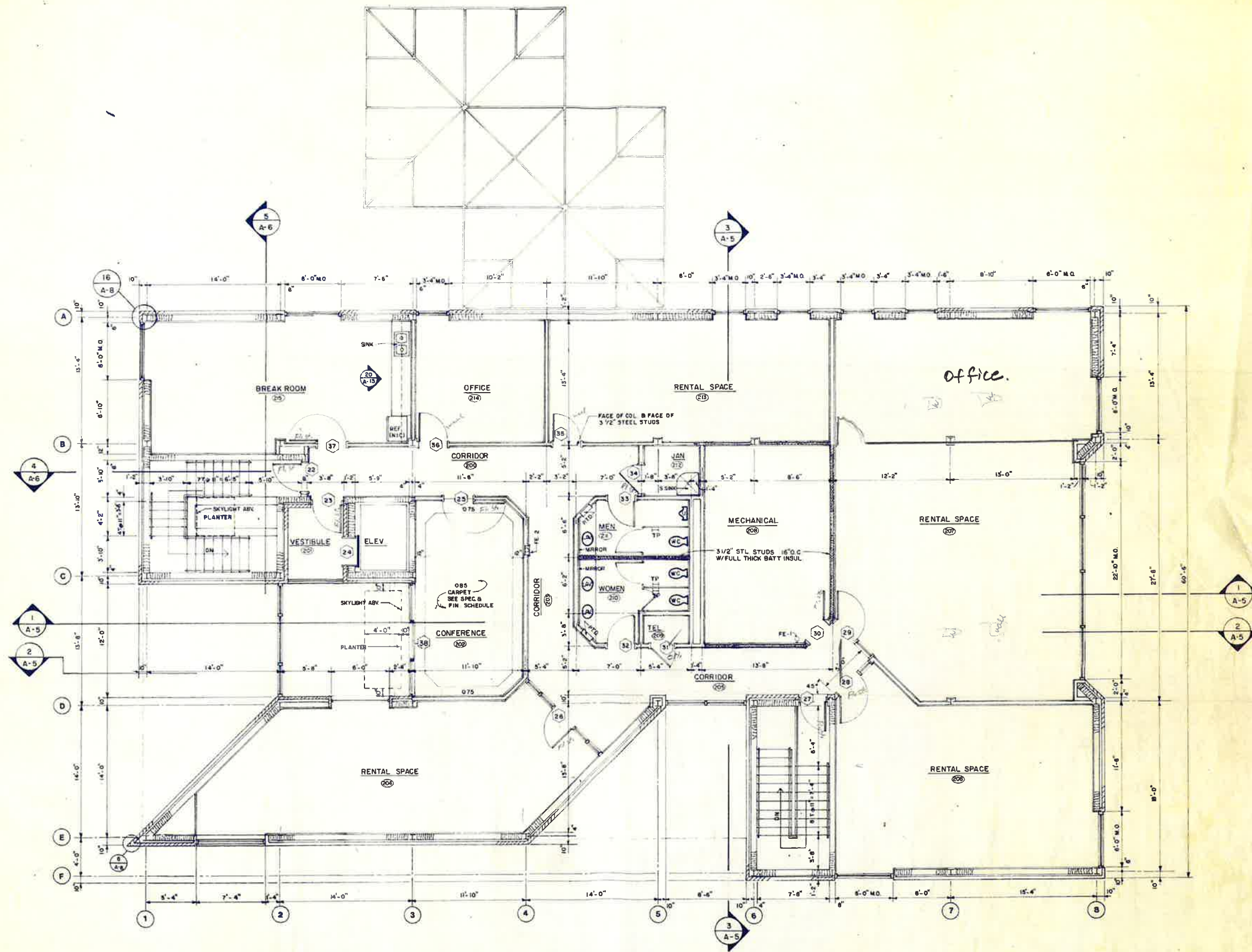
INTERNATIONAL CITY BANK



J. W. RICKET
 83-30
 ARCHITECT

ELLIS, RICKET & ASSOCIATES
A R C H I T E C T S
 Post Office Box 2977
 Atlanta, Georgia 31601 Telephone (404) 242-7556

A-2



SECOND FLOOR PLAN
1/4" = 1'-0"

INTERNAT



LJ TW
BE
83-30

ELLIS, RICKET & ASSOCIATES
A R C H I T E C T S
Post Office Box 2977
Valdosta, Georgia 31601
Telephone (912) 242 3556

A-3