

SALE

TWO ACRE DEVELOPMENT SITE 1200 BASS ROAD - MACON, GEORGIA 31210



SALES PRICE: \$750,000

LOCATION OVERVIEW

- Located in North Macon one mile from Interstate 75, Exit 172
- Traffic Count: 12,900± Average VPD (2022 GDOT)
- Convenient to shopping, restaurants and financial institutions

PROPERTY OVERVIEW

- 2± Acre Development Site (Divisible)
See Conceptual Site Plan Page 2
- 200'± Frontage on Bass Road
- Zoned Agricultural (Proposed Professional Office Rezoning)
- Topo: Rolling & partially cleared
- All utilities available to site. Sanitary sewer located several hundred feet from property with an approximate cost of \$40,000 to locate on-site

CBCMACON.COM

HAL HARPER, CCIM
478.951.3991 Cell
hharper@cbcworldwide.com
MIKI FOLSOM, CCIM
478.361.3036 Cell
mfolsom@cbcworldwide.com

CBCWORLDWIDE.COM

ART BARRY III, SIOR
478.731.8000 Cell
abarry@cbcworldwide.com
STEPHANIE FOLSOM, CCIM
478.361.8259 Cell
stephanie@cbcworldwide.com



**COLDWELL BANKER
COMMERCIAL**

EBERHARDT & BARRY

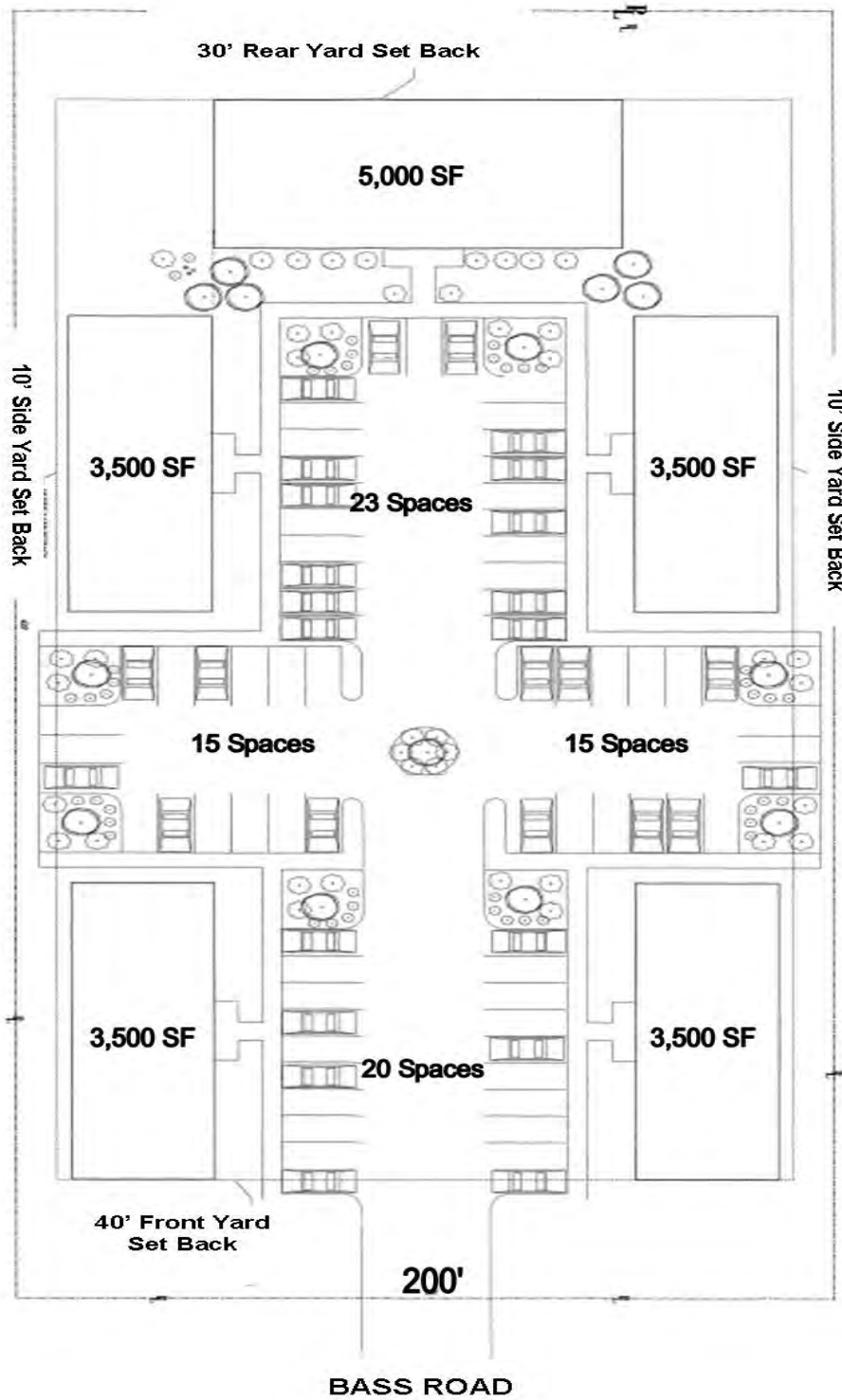
990 RIVERSIDE DRIVE
MACON, GA 31201
478.746.8171
800.926.0990

Revised 12/7/23

SALE

**TWO ACRE DEVELOPMENT SITE
1200 BASS ROAD - MACON, GEORGIA 31210**

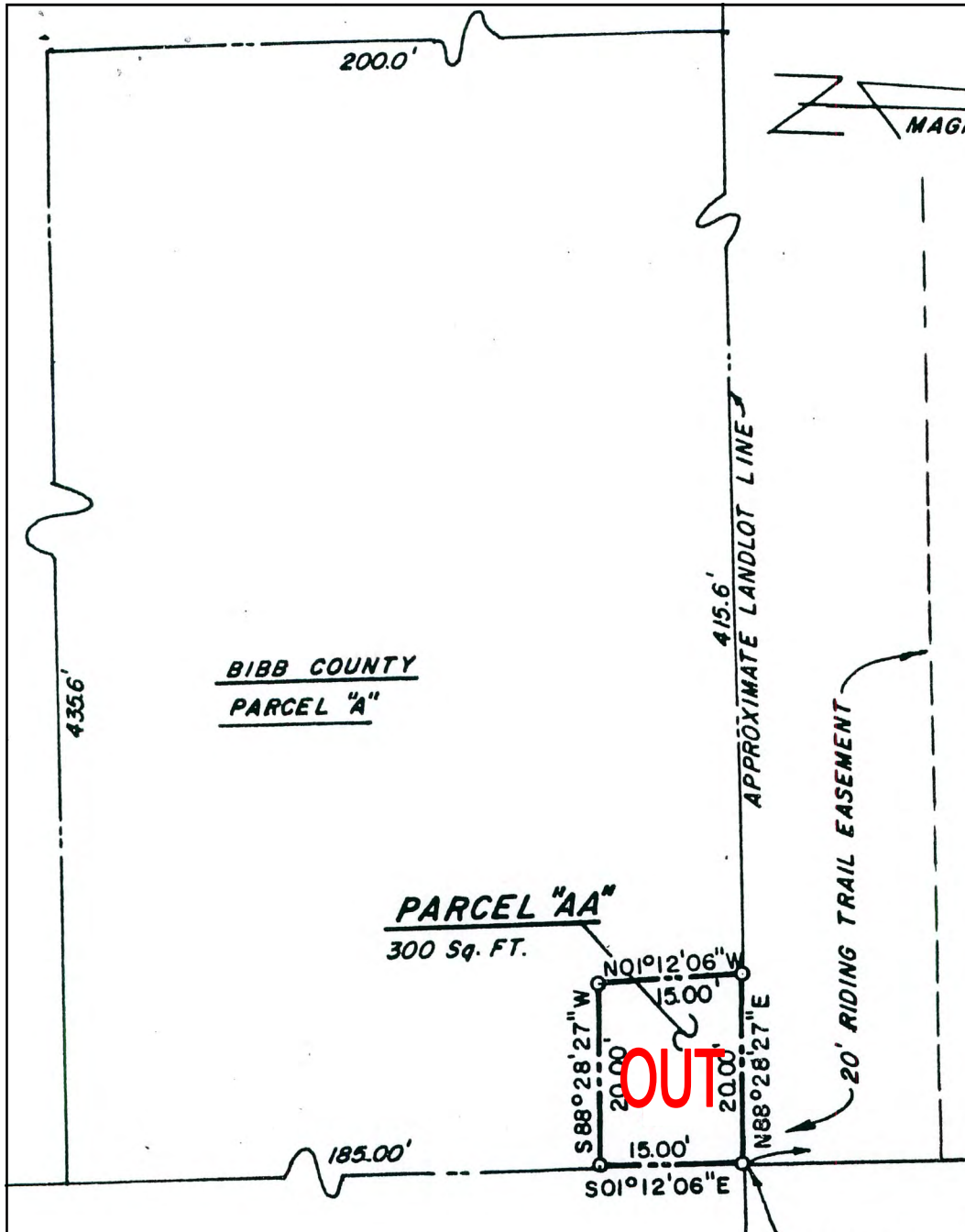
CONCEPTUAL SITE PLAN



SALE

TWO ACRE DEVELOPMENT SITE
1200 BASS ROAD - MACON, GEORGIA 31210

PROPERTY SURVEY



CBCMACON.COM

HAL HARPER, CCIM
478.951.3991 Cell
hharper@cbcworldwide.com
MIKI FOLSOM, CCIM
478.361.3036 Cell
mfolsom@cbcworldwide.com

CBCWORLDWIDE.COM

ART BARRY III, SIOR
478.731.8000 Cell
abarry@cbcworldwide.com
STEPHANIE FOLSOM, CCIM
478.361.8259 Cell
stephanie@cbcworldwide.com



**COLDWELL BANKER
COMMERCIAL**

EBERHARDT & BARRY

990 RIVERSIDE DRIVE
MACON, GA 31201
478.746.8171
800.926.0990

SALE

**TWO ACRE DEVELOPMENT SITE
1200 BASS ROAD - MACON, GEORGIA 31210**

TOPO MAP



CBCMACON.COM

HAL HARPER, CCIM
478.951.3991 Cell
hharper@cbcworldwide.com
MIKI FOLSOM, CCIM
478.361.3036 Cell
mfolsom@cbcworldwide.com

CBCWORLDWIDE.COM

ART BARRY III, SIOR
478.731.8000 Cell
abarry@cbcworldwide.com
STEPHANIE FOLSOM, CCIM
478.361.8259 Cell
stephanie@cbcworldwide.com



**COLDWELL BANKER
COMMERCIAL**

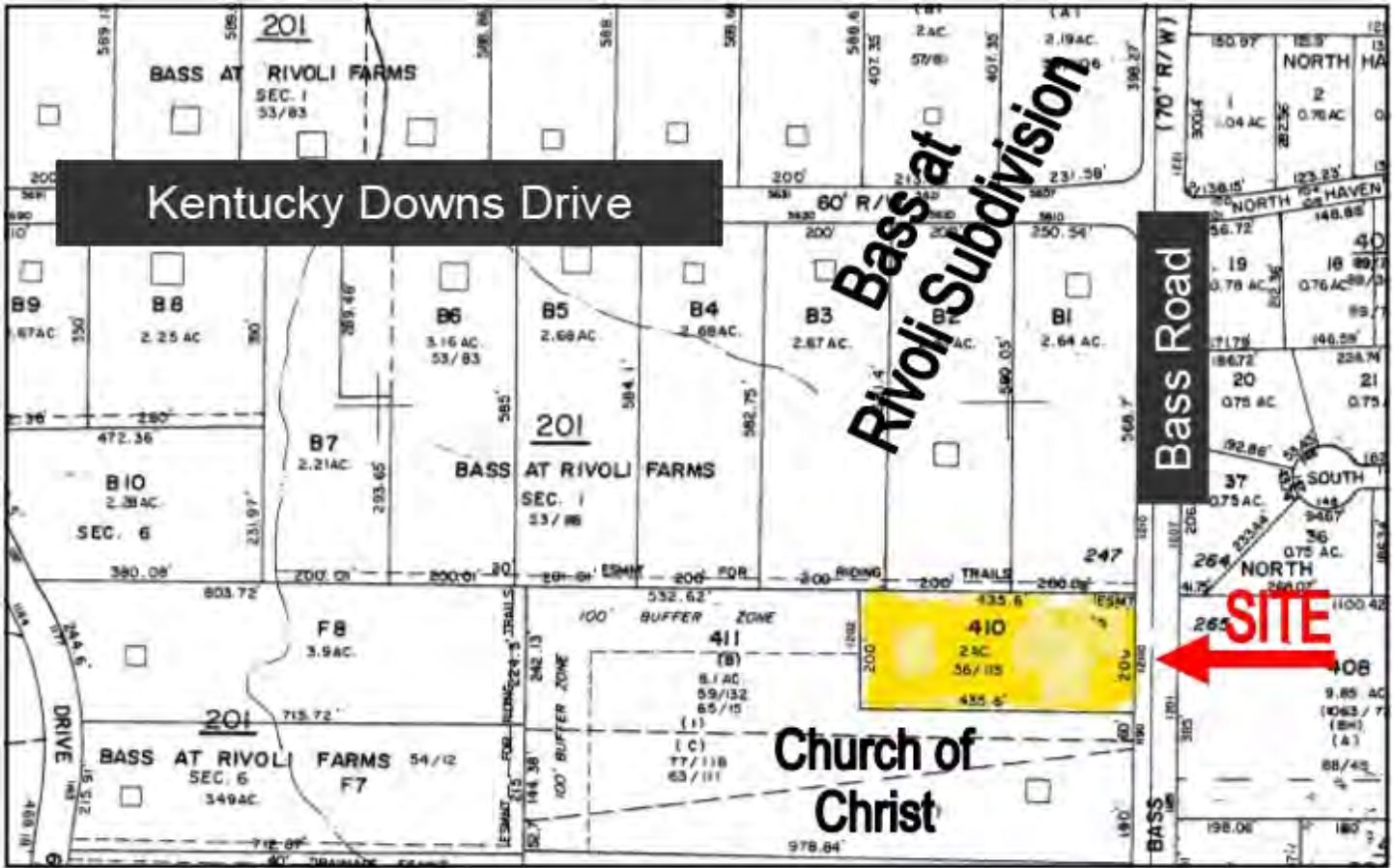
EBERHARDT & BARRY

990 RIVERSIDE DRIVE
MACON, GA 31201
478.746.8171
800.926.0990

SALE

TWO ACRE DEVELOPMENT SITE
1200 BASS ROAD - MACON, GEORGIA 31210

PLAT / PARCEL MAP / STREET VIEW



CBCMACON.COM

HAL HARPER, CCIM
478.951.3991 Cell
hharper@cbcworldwide.com
MIKI FOLSOM, CCIM
478.361.3036 Cell
mfolsom@cbcworldwide.com

CBCWORLDWIDE.COM

ART BARRY III, SIOR
478.731.8000 Cell
abarry@cbcworldwide.com
STEPHANIE FOLSOM, CCIM
478.361.8259 Cell
stephanie@cbcworldwide.com



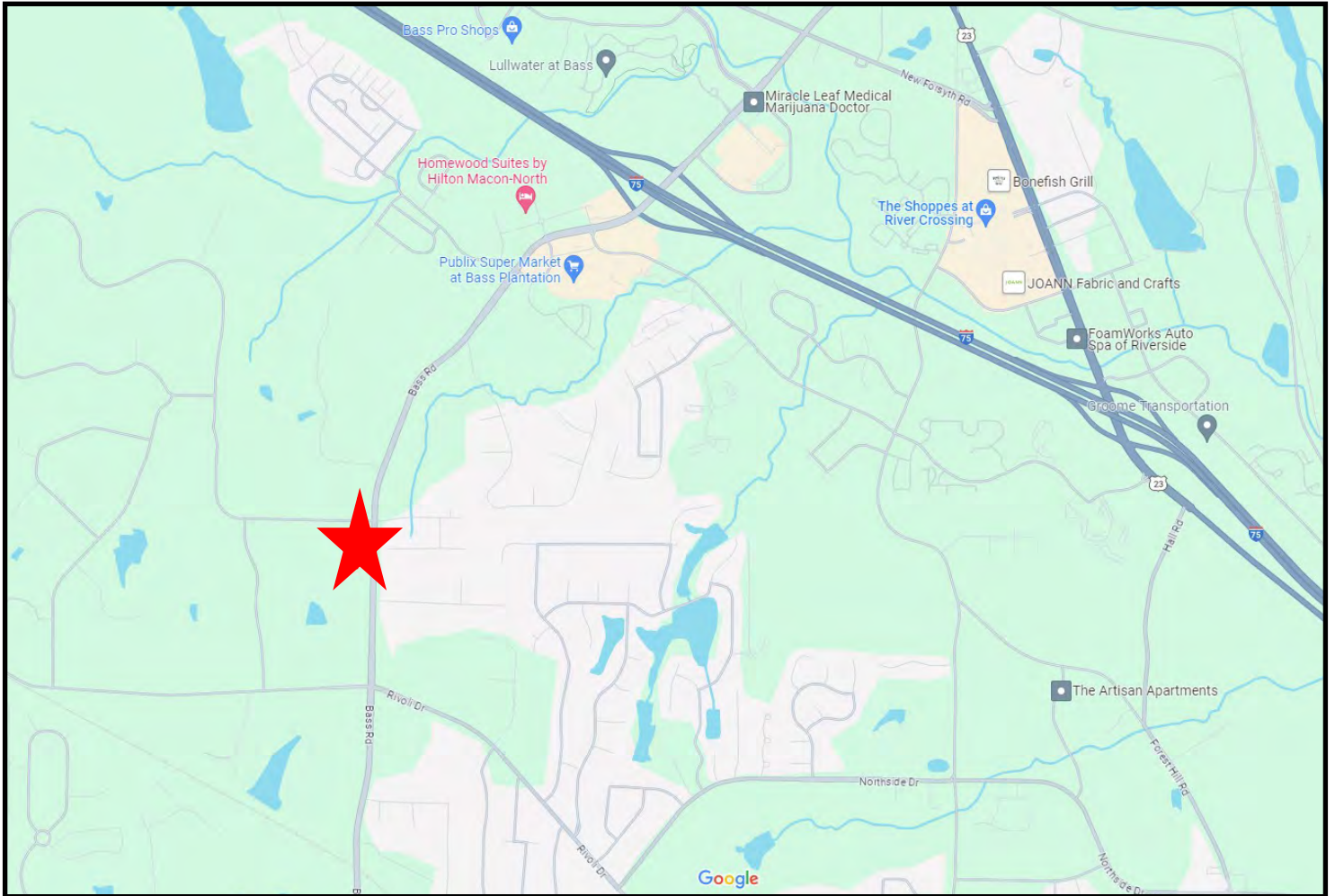
**COLDWELL BANKER
COMMERCIAL**
EBERHARDT & BARRY

990 RIVERSIDE DRIVE
MACON, GA 31201
478.746.8171
800.926.0990

SALE

**TWO ACRE DEVELOPMENT SITE
1200 BASS ROAD - MACON, GEORGIA 31210**

LOCATION MAP



CBCMACON.COM

HAL HARPER, CCIM
478.951.3991 Cell
hharper@cbcworldwide.com
MIKI FOLSOM, CCIM
478.361.3036 Cell
mfolsom@cbcworldwide.com

CBCWORLDWIDE.COM

ART BARRY III, SIOR
478.731.8000 Cell
abarry@cbcworldwide.com
STEPHANIE FOLSOM, CCIM
478.361.8259 Cell
stephanie@cbcworldwide.com

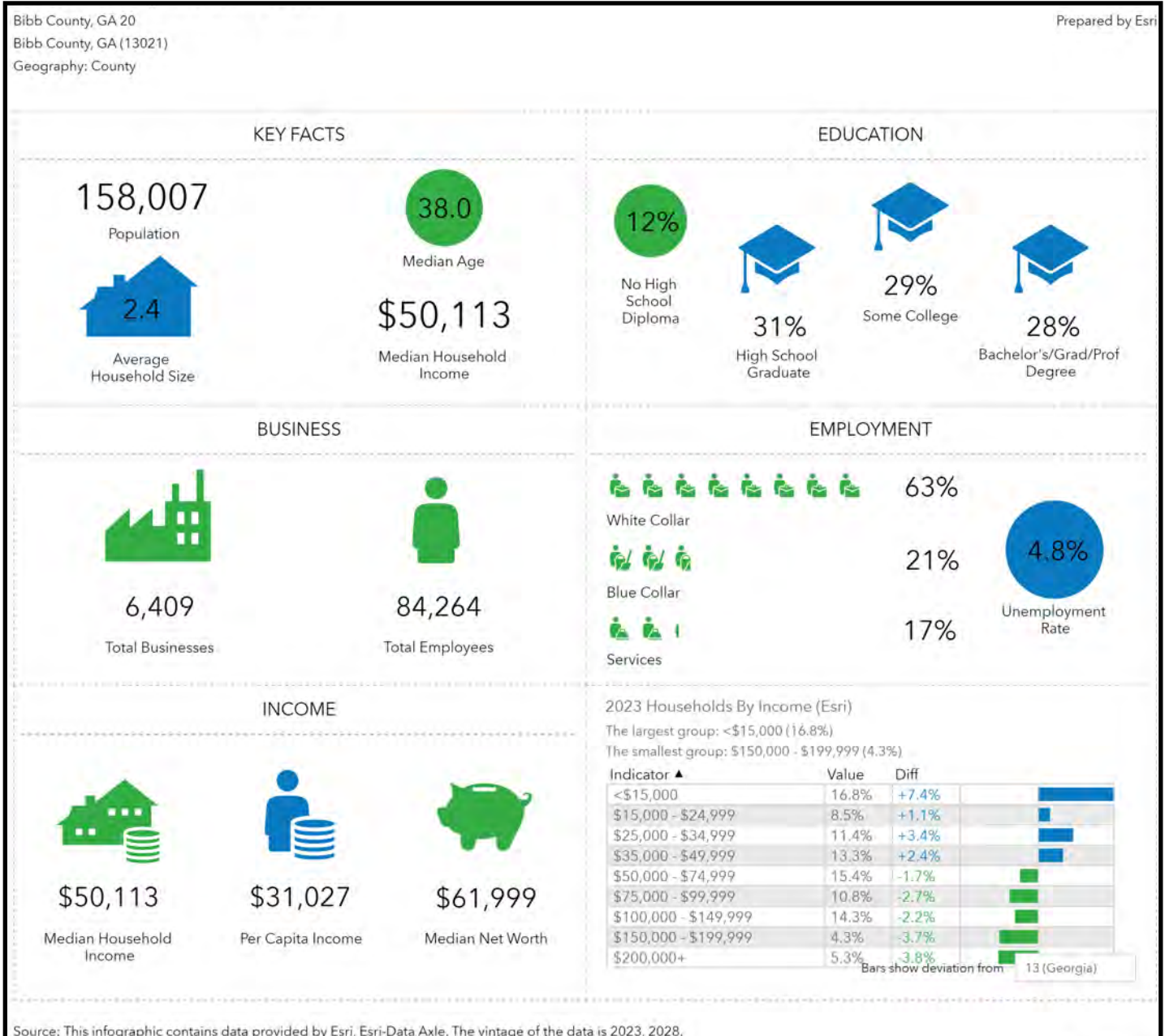


**COLDWELL BANKER
COMMERCIAL**

EBERHARDT & BARRY

990 RIVERSIDE DRIVE
MACON, GA 31201
478.746.8171
800.926.0990

DEMOGRAPHICS - BIBB COUNTY



CBCMACON.COM

HAL HARPER, CCIM
478.951.3991 Cell
hharper@cbcworldwide.com
MIKI FOLSOM, CCIM
478.361.3036 Cell
mfolsom@cbcworldwide.com

CBCWORLDWIDE.COM

ART BARRY III, SIOR
478.731.8000 Cell
abarry@cbcworldwide.com
STEPHANIE FOLSOM, CCIM
478.361.8259 Cell
stephanie@cbcworldwide.com



**COLDWELL BANKER
COMMERCIAL**
EBERHARDT & BARRY

990 RIVERSIDE DRIVE
MACON, GA 31201
478.746.8171
800.926.0990